

# Osaka University Kasugaoka House



## Usage Guide

### Purpose of Establishment

In order to maintain the quality of accommodations suitable for inviting talented people abroad while covering the needs of the university hospitals and joint research collaborators.

### Intended Users

- International researchers and accompanying persons engaged in long-term research at Osaka University.
- Short-stay joint research collaborators.
- Outpatients of Osaka University Hospital and their accompanying persons.
- In addition, persons that are approved.

*Long-term and short-term accomodation for international researchers and joint research collaborators*

**Scheduled to open  
from June 2010**  
Information

### Office

Specialist (in charge of Kasugaoka House)  
Facilities Planning Division, Department of Facilities  
Osaka University Administration Bureau  
TEL : 06-6879-7948 FAX : 06-6879-7139  
E-mail : kasugaoka-house@ml.office.osaka-u.ac.jp

#### Name

Osaka University Kasugaoka House

#### Address

7 Minami-Kasugaoka, Ibaraki, Osaka

#### Structure · Scale

Three-storied reinforced concrete building

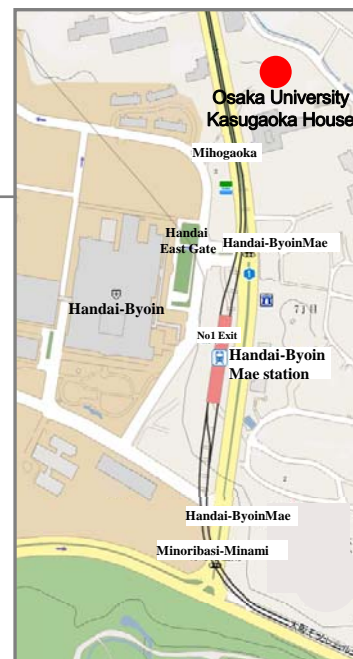
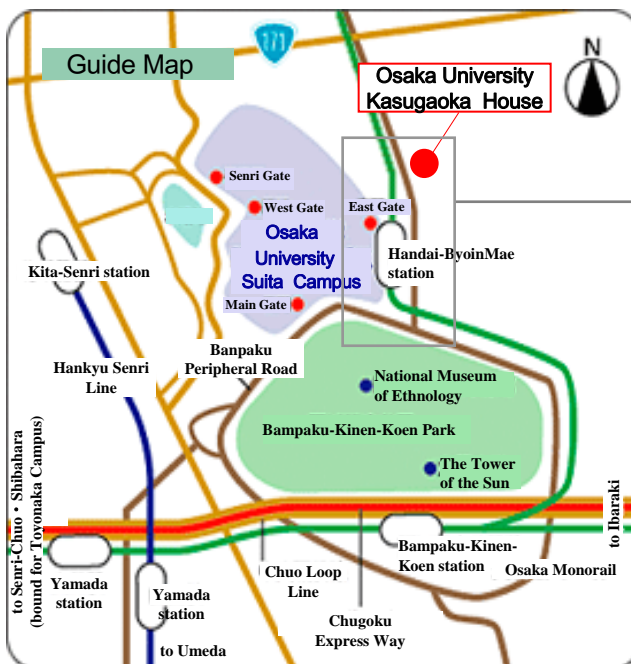
#### Access

**Osaka Monorail:** Get off at "Handai-Byoin-Mae Station". (5 minute walk)

**Hankyu Bus:** Take bus bound for "Handai-Honbu-Mae" or "Ibaraki-Mihogaoka" from Senri-Chuo Station, or take bus bound for "Handai-Byoin-Mae" at Kita-Senri Station.

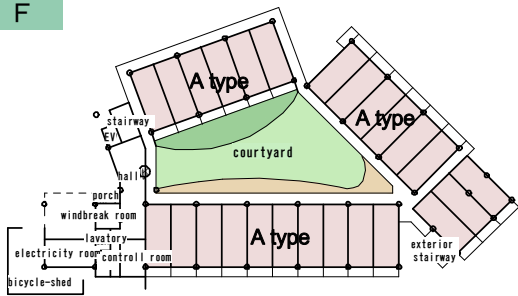
**Kintetsu Bus:** Take bus bound for "Handai-Honbu-Mae" from Ibaraki-Shi station on the Hankyu Kyoto Line.

※Hankyu Bus and Kintetsu Bus : Get off at "Handai-Byoin-Mae". (5 minute walk)

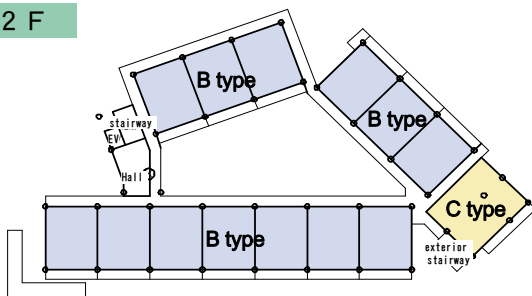


# Floor planning · Room arrangement

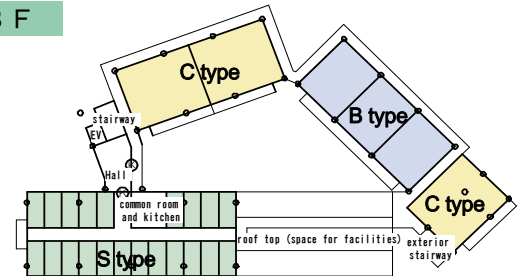
1 F



2 F



3 F



## Osaka University Kasugaoka House

### Quality & Support

TV, furniture, home electric appliances, washing machine, refrigerator, air-conditioning etc.

Maintenance of the courtyard for residents to socialize

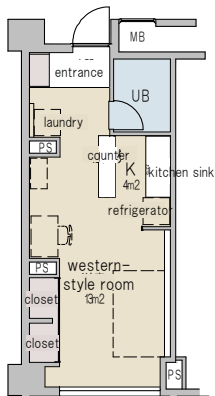
Supported by staff that speak English

5 minutes by walk to Handai-Byoin-Mae station

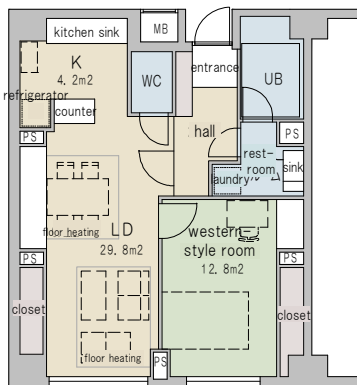
Internet support (contracts made separately)

Security measures with self-locking

A type

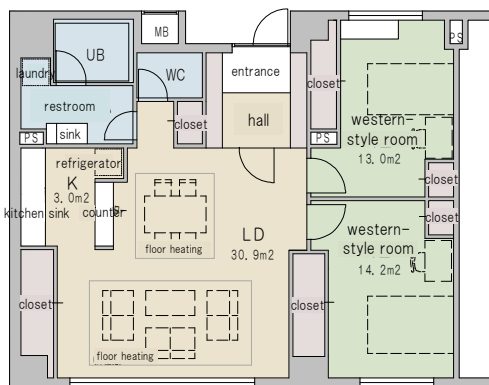


B type

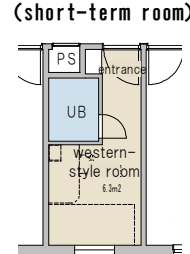


(unfurnished rooms are available)

C type



S type



## Outline of structure

room type	Atype (furnished w/electrical appliances)	Btype (furnished w/electrical appliances)	Btype (unfurnished and w/o electrical appliances)	Ctype (furnished w/electrical appliances)	S type (short-term)
room area	32m <sup>2</sup>	65m <sup>2</sup>	65m <sup>2</sup>	97m <sup>2</sup>	12m <sup>2</sup>
number of rooms	25rooms	9rooms	7rooms	4rooms	21rooms
floor layout	1K western-style 13m <sup>2</sup> K 4m <sup>2</sup>	1LDK western-style 13m <sup>2</sup> LDK 34m <sup>2</sup>	1LDK western-style 13m <sup>2</sup> LDK 34m <sup>2</sup>	2LDK western-style 14m <sup>2</sup> western-style 13m <sup>2</sup> LDK 34m <sup>2</sup>	1 western-style 6m <sup>2</sup>
rent	monthly fee ¥70,000 (including common service charge)	monthly fee ¥120,000 (including common service charge)	monthly fee ¥100,000 (including common service charge)	monthly fee ¥180,000 (including common service charge)	daily rent ¥3,000
(A · B · C) Actual expenses of utilities and communication fees are charged separately. (S) Actual expenses of utilities and communication fees are included on above monthly lodging fee.				※ Note that prices are subject to change. ※ Note that prices are subject to change.	